

GLOBAL Rock ART

Congrès International d'Art Rupestre
Parc National Serra da Capivara, Piauí - Brésil
29 juin - 3 juillet 2009

Session 11 : Art préhistorique - Signes, symboles, mythes, idéologie.

Re-Birth: a Late Neolithic Mytheme

Léo DUBAL, dubal@archaeometry.org; José Luis GALOVART, pgalovart@yahoo.es
& Dario SEGLIE dario.seglie@alice.it

Abstract

*Six to four thousands years ago, proto-languages did not yet allow homo sapiens to express verbally his perception of cyclic time. Nevertheless representations of the **Re-Birth Mytheme** are found in his artefacts:*

- *6000 Years Old Mummies in Foetal Position (Quebrada de Chulin)*
- *Engravings @ Winter Solsticial Sunrise (S.Germano di Chisone)*
- *Engravings @ Retarded Summer Solstice Sunrise (Valcamonica & Mt Bego)*
- *Artificial Landscape @ Summer Solstice Sunset (Giza)*
- *Natural Landscape @ 4 weeks before equinox (Tell El-Amarna & Mogor)*

Do Myths have a Pre-history ?

Before homo sapiens speaking abilities reached the narrative level necessary to tell a myth, artefacts might have been used to express mythemes, the embryonic expression of myths.

Some 6 to 4 thousands years old artefacts will be here interpreted as Mytheme of the Re-Birth, an early way to keep death at bay !

Lost in South-american Altiplano, the Cueva de las Momias (also called Inca Cueva #4), exhibits on its walls matrices of painted dots and strokes. (see **Fig.1**) .This shelter seems to have been inhabited between 10 to 6 kyears ago.

The Cueva de las Momias is located at 3680 meters above sea level at two hours walk inside the Quebrada de Chulin, which is a small affluent of Rio Grande. (see **Fig.2**) .It was first visited in 1936 by the Medical Doctor and Folk Music Composer Justiniano Torres Aparicio, who found there three naturally dessicated mummies, lying among heaps of sediments.

In 1988, Carlos Aschero made an excavation, over 1 m deep, and found charcoal, which, in 1996, Nami dated as 10 kyr BP.

With the most appreciated support of Mrs Alicia Torres Aparicio, Director of the Museo Justiniano Torres Aparicio in Humahuaca (Prov. Jujuy), two tiny samples of 100 milligrams of temporal skin of the skull (catalogued under J.T.A.-240) were collected (see **Fig.3**) and then analyzed at the AMS facility in Zürich. The deltaC13 value of those samples has been measured to be -19.5 ± 1.1 ‰ (-19 ‰ is the typical value of human collagen). This value gives confidence of the absence of contamination, and comforts the measured age of 6 kyr-calibrated. Chulina, the andean mummy, is therefore 700 years older than Ötzi.

The foetal position of her companions Chulinita (a baby in her cradle) & Rosalia (a young women wrapped in a vicuña skin and a finely woven linen) are the oldest evidences for the mytheme of Re-Birth, long before artificially embalmed Egyptian mummies.

In Europe, at San Germano di Chisone, Dario Seglie at winter solstice sunrise took the picture (see **Fig.4**) of the engraving of this strange bilobate flower aligned towards the rising sun, perhaps another expression of the Rebirth Mythene.

In Valcamonica, at Dos Sulif, because of the crest of the mountain, the sun rises quite late at summer solstice. The surprinsing consequence is that the shadow of the plumbline covering the main axis of the camunian roses (see **Fig.5**) is pointing toward East, a typical equinoxial sun rise feature.

In Mont Bégo, one finds exactly the same feature (see **Fig.6**). As demonstrated by Chantal WOLKIEWIEZ, the summer solstice rising sun is hidden behing Mt BEGO and first appears in the East.

It is worth taking a look at the perception of the mythical Sphinx of Giza (see **Fig.7**). Even its very 1st photographical recording by Armand de Banville is misleading. It looks as if it is a decorative piece in front of the Chephren's pyramid....

Fig.8 is fairer. The Sphinx "rules" over the two largest pyramids of Giza. During pyramids time, the head of the Sphinx has been carved out of an hard limestone of the Mekkattam formation. Earlier, it probably was a (*pre-pharaonic*) *holy stone*. On this same Mekkattam layer are built the pyramids. The rest of the body of the Sphinx is out a soft limestone, partially saved from erosion by the surrounding sand.

Taking the Giza holy stone (i.e: the *butte témoin* not yet carved as a Sphinx head) as a pivot point, the erection of the pyramids appears as a "pharaonic" project aiming at creating an artificial landscape which would mime, at summer solstice sunset, the hieroglyph AKHET (see **Fig.9**). Let us mention here that such an *heretic view* upon the erection of the pyramids is shared by the spanish-egyptian mission.

Juan Antonio Belmonte managed three years ago to take a picture (see **Fig.10**). of this beautiful demonstration of the Re-Birth Mythene "Akhet" at summer solstice sunset.

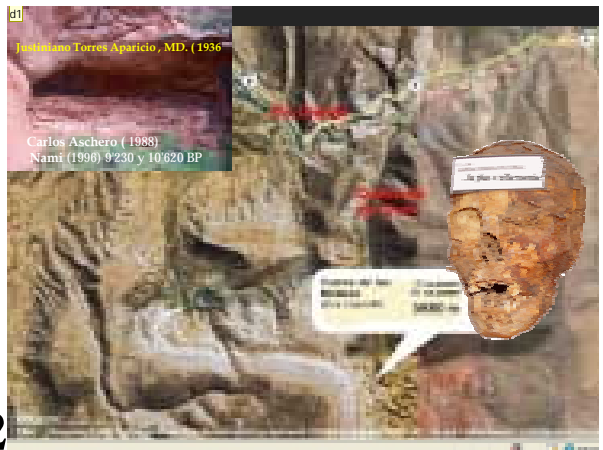
Thirteen centuries after the erection of the AKHET-like Pyramids, the Re-Birth Mythene AKHET was again in fashion. Akhenaton and Nefertiti inaugurated their new capital AKHET-ATON 10 No-Moon (i.e. New-Moon) after the Total Solar Eclipse of 1337.05.14, on 16 peret IV, reign year V, in the ancient Egyptian calendar, i.e. NM - 1336.03.05. As demonstrated by Marc Gabolde, the axis of the first temple was this time aiming at the rising sun 1 No-Moon before the vernal equinox (see **Fig.11**). The wadi in the eastern side of the Nile made obsolete the construction of pyramids.....

Another avatar of the Rebirth Mythene' artefact is the labyrinth. In Galicia, in Mogor, while the sun is setting at vernal equinox, the labyrinth opens up towards the sea (see **Fig.12**). Unfortunately the presence of trees in front of the labyrinth blurs the overall picture .

The channel between the island of Ons and the islet of Onza is a natural opening toward the sea, the metaphor for a labyrinthal journey until the rebirth of the sun (see **Fig.13**). Apparently, the Onza-Ons channel, 18 km away, even in the absence of vegetation, cannot be seen directly from the labyrinth. Nevertheless, it is easy with a pole in the cupmark of the labyrinth, and by climbing up the hill a little bit, to determine the direction of the opening to be given to the labyrinth. And just four weeks before vernal equinox, the sun setting over the channel has a taste of déjà vu, hasn't it ?



1



2



3



4



5



6

